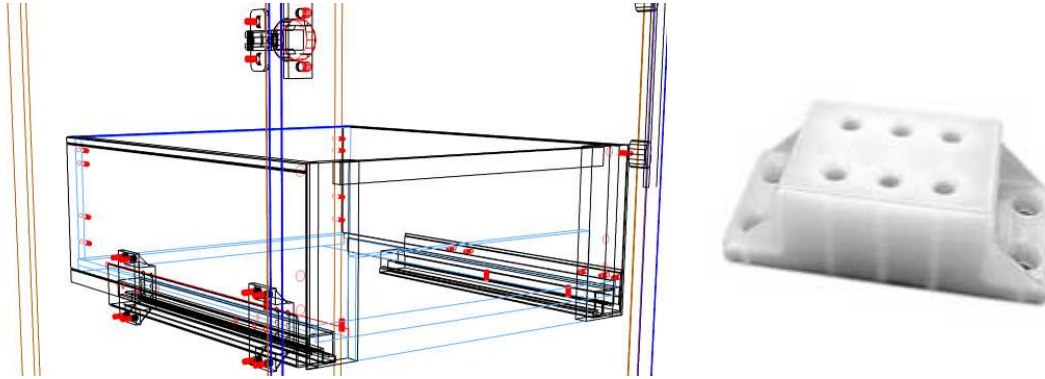


Blum Spacer Blocks (T59.3570) User Guide.



Introduction

Overview

- This Package adds the Blum Spacer Blocks (T59.3570) to a Rollout drawer in Cabinet Vision Solid.
- They activate when the hinge rollout clearance is 25mm or 1 inch, and the hinge is on the cabinet end.
- They can also be activated manually, by increasing the rollout side clearance, as outlined below.
- Spacers are then added to the first and last guide holes.
- Each Spacer has 4 holes drilled into the cabinet ends, and the guide holes are then hidden.

Default Settings

UCS Public Variables

There are two Public Variables for the Spacer Block UCS, for the drilling sizes.

To change these variables go to the Utilities – Edit User Created Standards from the Room Plan or Elevation views



Then click on the “{ DRAWS } -- Blum Spacer Blocks” , The Public Variables are on the top right of the screen:

Public Variables	
Hole Depths	12mm
Hole Diameters	5mm
Mounting Holes	Center

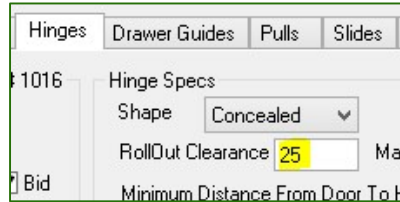
1. **Hole Depths** **The depth of the Spacer Block Holes**
2. **Hole Diameters** **The diameter of the Spacer Block Holes**
3. **Mounting Holes** **Select the Top, Bottom or Center mounting holes as default. (v9+ only)**

Spacer Block Usage

Activate from your Hinge Rollout Clearance:

Firstly ensure the hinge you are using has a Rollout Clearance of 25mm or 1 inch as shown here:

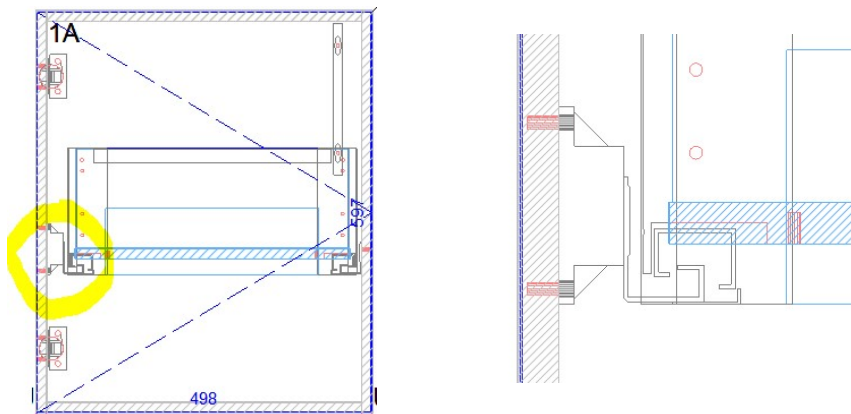
- Hinge Material Catalog Version 7 or 8:



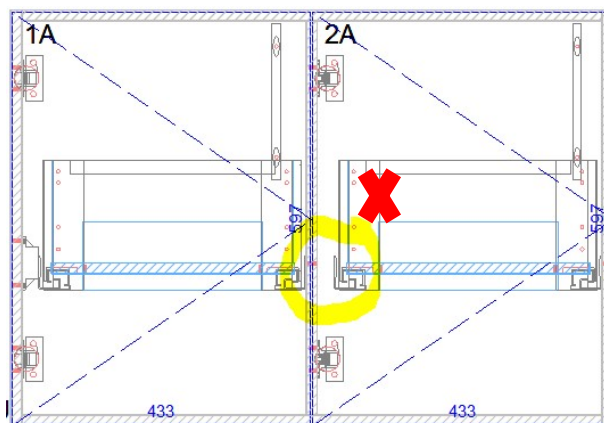
- Hinge Material Catalog Version 9:

	Material	Hinge	Finishes	Finish Types	Textures		
Name	Type	Inset	Maximum ...	Opening An...	Door Edge To Re...	Roll Out Clear...	
Blum ClipTop Insrta 107	Concealed	-2	750	107.000	22.50	25	
Blum ClipTop Expndo Cen	Concealed	-2	750	-70.000	22.50	0	

Now, when the rollout is mounted on the cabinet end, the Spacer Blocks will activate automatically:



NOTE: If the rollout is mounted on a partition, and the door is hinged off the partition also, the rollout will move over, but the Spacer Blocks will not activate. To activate in this situation refer to the manual activation method shown below...



Activate Manually:

If your hinges do not have a rollout clearance or the rollout is mounted on a partition as shown above or any other situation where the spacer blocks do not appear, simply increase the rollout side clearance by 25mm or 1 inch.

- For Metric, type in “-25” next to THE EXISTING value, and press ENTER.
- For Imperial, type in “-1” next to THE EXISTING value, and press ENTER.



Blum Cliptop Hinge package (BLMCTOP)

*We have not set the hinge rollout clearance in any of our hinge packages including the Blum Cliptop Hinges package. This is because not everybody wants it to be set. Feel free to set it to 25mm for the hinges that you would like to make the spacer blocks activate.

Package Exclusions

Some of the items shown in various images contained in this document are not included in the Blum Spacer Blocka Package, but come from other packages which are sold separately as listed here:

- **BLMLBOX** Blum Legrabox Drawers.
- **BLMCTOP** Blum Cliptop Hinges.

See our website for more detailed information on these packages.