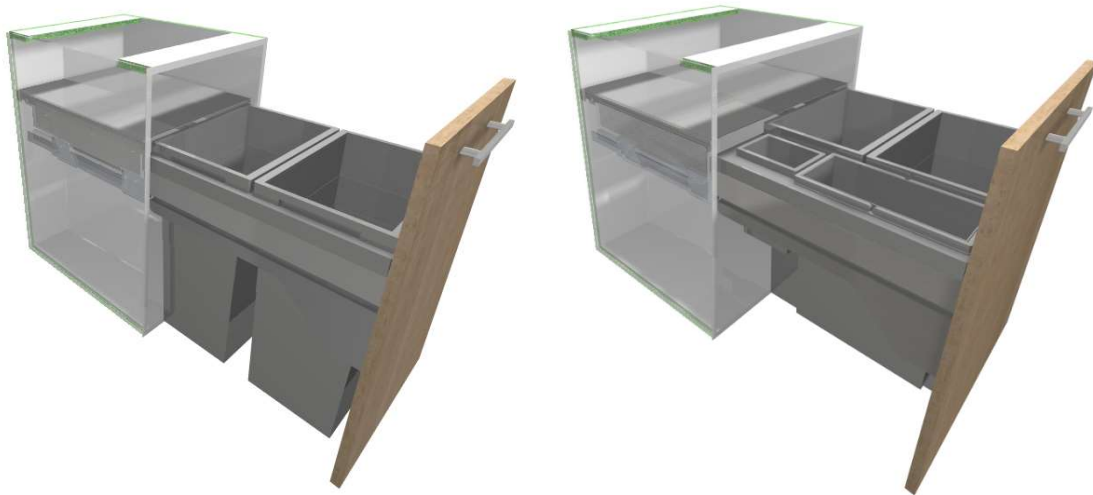


# Hafele Hailo Euro Cargo ST 45/60 User Guide.

## Introduction

### Overview

- This Package from Solid IT adds Hafele Hailo Euro Cargo ST45 and ST60 Bin Drawers in dark grey.



## Included in This Package

### User Created Standards

- { DRAWS } -- Hafele HAILO EuroCargo ST

### Material Schedules

- Hafele Hailo EuroCargoST Std      Drawer Guide Schedule for panel type drawer front
- Hafele Hailo EuroCargoST Frame      Drawer Guide Schedule for frame type drawer front

### Materials

- Hailo EuroCargo ST Std      Drawer Guide to drill panel type drawer front
- Hailo EuroCargo ST Frame      Drawer Guide to drill frame type drawer front
- Hailo EuroCargo ST45      Hafele Item Number 503.70.332
- Hailo EuroCargo ST60      Hafele Item Number 503.70.455

### Drawer Box Construction

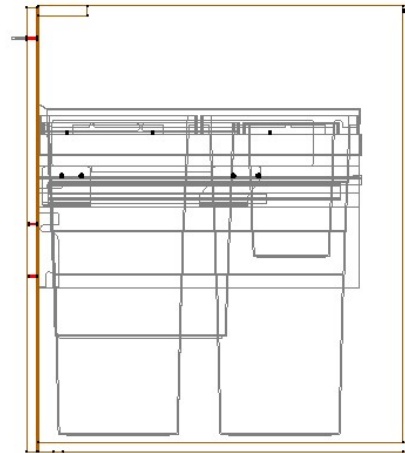
- Hafele Hailo EuroCargo ST      System Type Drawer Box

## Euro Cargo ST 45/60 Usage

### Minimum Sizes

Start with a drawer box which has the following space:

- 412-418mm** internal opening width for the ST45 or
- 562-568mm** internal opening width for the ST60
- 530mm** minimum internal depth.
- 510mm** minimum internal height.



### Drawer Box Construction

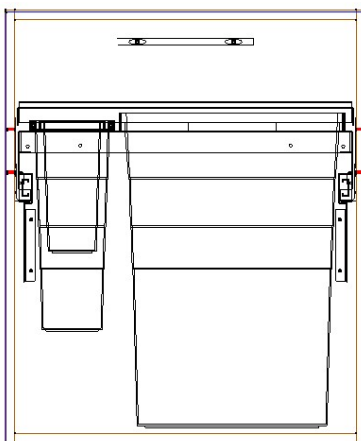
“Hafele Hailo EuroCargo ST”

Drawer Box

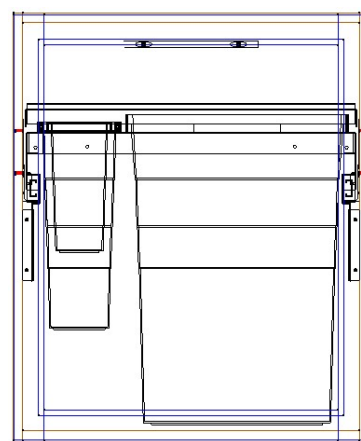
### Drawer guide material

Drawer guides can be selected by either the Drawer Guide Schedule for the cabinet, or the Drawer Guide material for the drawer.

There are two types due to the two possible positions of the front brackets as shown here:



Standard (front brackets face in)



Frame (front brackets face out)

#### Drawer Guide Schedule (Section View - Properties tab, Hardware)

Drawer Guide Schedule

Drawer Guide Schedule

#### **OR**, Drawer Guide Material

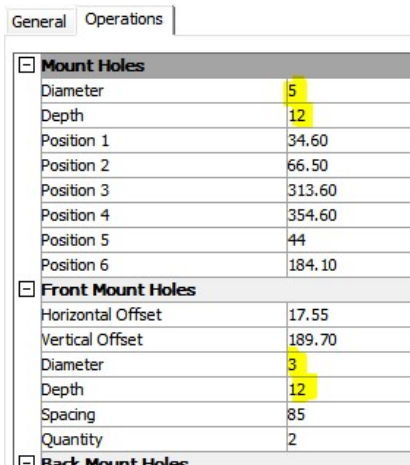
1. Section view – double click on Drawer front
2. Click the Drawer Box tab,
3. press the change button,
4. search for Hailo and select one of these – then press OK:

Name	Description	Type
▶ Hailo EuroCargo ST Std	Hailo EuroCargo ST Standard	Drawer Guide
Hailo EuroCargo ST Frame	Hailo EuroCargo ST Frame	Drawer Guide

## Drilling Settings

### Drawer Guide Drilling

To Edit the drawer side or front drilling sizes use the Material Manager and search for Hailo. Double Click the “Hailo EuroCargo ST Std” or “Hailo EuroCargo ST Frame” Drawer Guide material Edit the hole sizes shown here to your preferences:



General		Operations
<input checked="" type="checkbox"/> <b>Mount Holes</b>		
Diameter		5
Depth		12
Position 1		34.60
Position 2		66.50
Position 3		313.60
Position 4		354.60
Position 5		44
Position 6		184.10
<input checked="" type="checkbox"/> <b>Front Mount Holes</b>		
Horizontal Offset		17.55
Vertical Offset		189.70
Diameter		3
Depth		12
Spacing		85
Quantity		2
<input checked="" type="checkbox"/> <b>Back Mount Holes</b>		

### Shelf/Lid Side Plate Drilling

The “{ DRAWS } -- Hafele HAILO EuroCargo ST” UCS has 2 public variables for the side plate drilling.

- To edit them to change these variables go to the Utilities – Edit User Created Standards from the Room Plan or Elevation views



- Then click on the “{ DRAWS } -- Hafele HAILO EuroCargo ST” UCS.
- On the top right hand side of the screen you will see the Public Variables list:

Prompt:	Value:	Description:
Side Plate Holes Depth	12mm	Set Depth of Side Plate Holes
Side Plate Holes DIA	3mm	Set Diameter of Side Plate Holes